



The Original
MIPOLAM 1937

Mipolam® 150

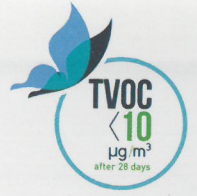
TWS

www.twsplus.com

Gerflor®

MIPOLAM® 150

PUR PROTECT



PUR Protect

34-43



2037



1003



1004



2093



1005



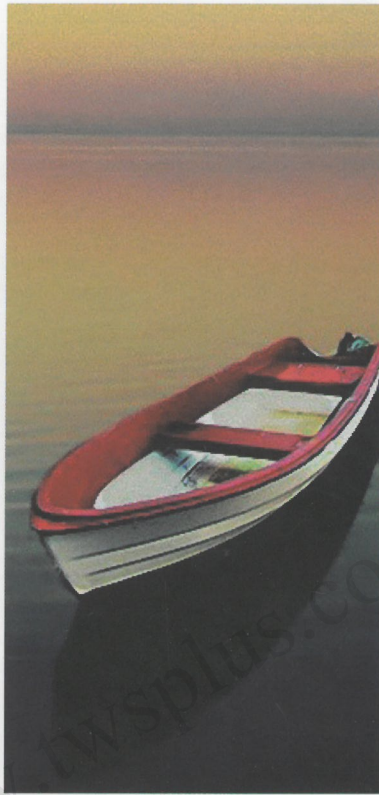
1006



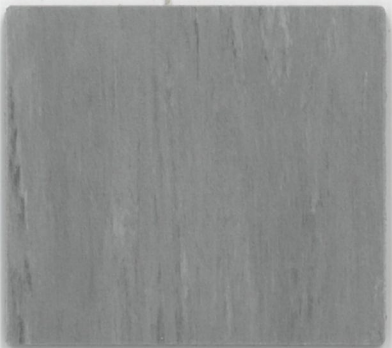
Compact sheet, without foam backing



2091



1014



2038



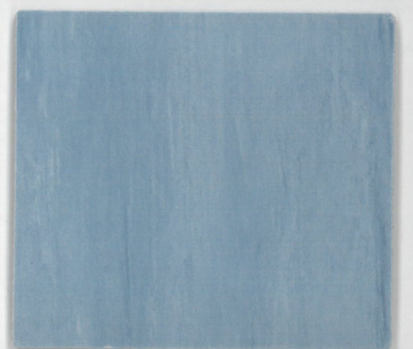
1010



2049



1013



1007



Compact sheet, without foam backing



2092



2095



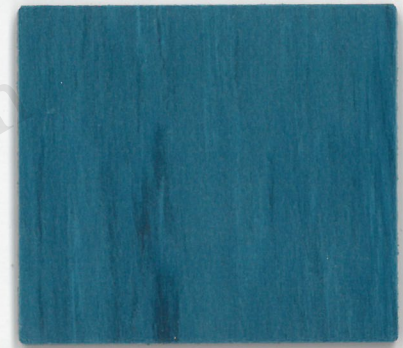
2046



2034



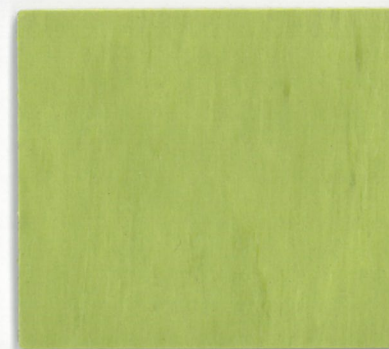
2048



2096



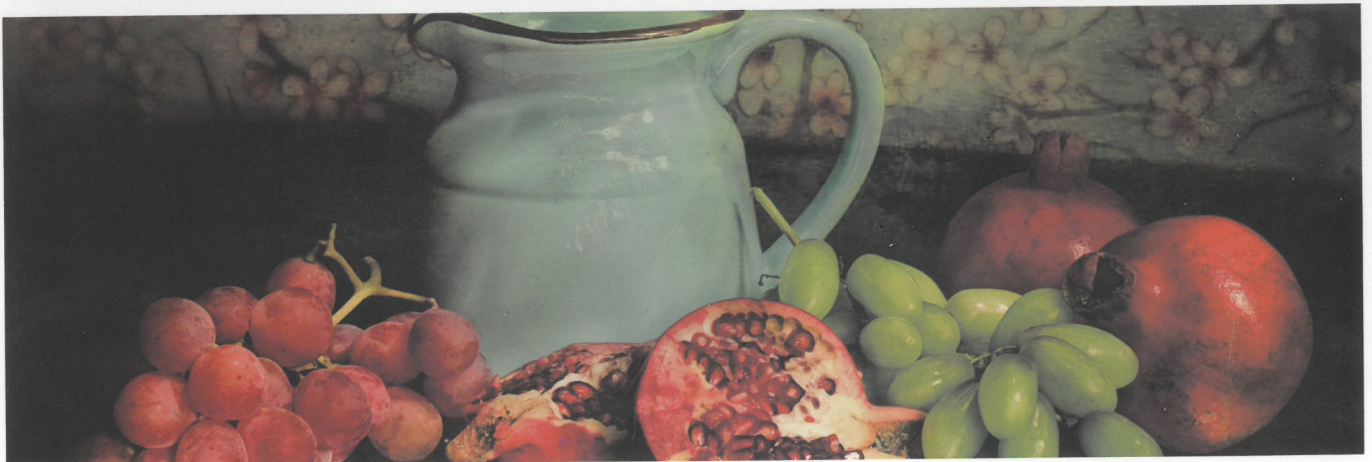
2047



2097



2094



Performances and benefits



Excellent abrasion resistance



Matt finish surface: enhanced design & colour



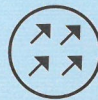
Available in 2 m sheet



Homogeneous vinyl flooring suitable for medium to heavy duty traffic areas



Flexible flooring, easy to install & weld



Directional design available in 22 references

FEWER VOC'S, BETTER INDOOR AIR QUALITY



COMPOSITION 100% REACH compliant

- FREE of formaldehyde
- FREE of heavy metals
- FREE of solvent



WELLNESS

Health

- Antibacterial activity (inhibits growth > 99 %)



INDOOR AIR QUALITY

- TVOC emissions 100 times lower than norm requirements (TVOC < 10 µg/m³ after 28 days)
- Floorscore certified
- M1 certified
- Comply with AgBB protocol
- No formaldehyde emission



RECYCLABILITY

- 100 % recyclable product



RECYCLED CONTENT

- 100 % REACH compliant recycled content

INSTALLATION

Installation should be carried out in accordance with local standards. Subfloor should be smooth, hard, clean and dry prior to laying. Where applicable the subfloor must incorporate an effective Damp Proof Membrane. The material must be allowed to acclimatize 24 hours before installation in a room temperature of between 18-24°C. All seams must be hot welded using Gerflor® matching welding rod.

MAINTENANCE

No wax is needed right after installation. Maintenance should be carried out regularly to retain the appearance and durability of the floor. The floorcovering should be maintained with regular sweeping and damp mopping using a neutral cleanser. More intense cleaning should be carried out using a fine spray cleaning pad under a floor machine, or for larger areas combined machine cleaning.

Mipolam® 150

DESCRIPTION

Total thickness	ISO 24346 (EN 428)	mm	1.5*	2
Weight	ISO 23997 (EN 430)	g/m ²	2500	3300
Width / Length of sheet	ISO 24341 (EN 426)	cm / lm	200 / 20	

CLASSIFICATION

Norm / Product specification	-	-	ISO 10581(EN 649)	
European classification	ISO 10874 (EN 685)	class	23 - 31 / 34 - 43	
Fire rating	EN 13 501-1	class	Bfl-s1	
Static electrical propensity	EN 1815	KV	<2	
Electrical resistance	EN 1081	Ω	>10 ⁹	
Slip resistance dry	EN 13893	-	≥0.3	
Slip resistance wet	DIN EN 16165	class	R9	

PERFORMANCES

Type binder content	ISO 10581	type	II	
Dimensional stability	ISO 23999 (EN 434)	%	≤ 0.4	
Castor chair test	ISO 4918 (EN 425)	-	OK	
Thermal conductivity	ISO 10456 (EN 12524)	W/(m.K)	0.25	
Colour fastness	ISO 105 - B02	degree	≥ 6	
Chemical products resistance	ISO 26987 (EN 423)	-	OK	
Anti-bacterial activity (E. coli - S. aureus)(1)	ISO 22196	-	>99% Inhibits growth	
Surface treatment	-	-	PUR Protect	
Color number	-	-	22	

ENVIRONMENT / INDOOR AIR QUALITY

TVOC after 28 days	ISO 16000 - 6	µg/m ³	< 10	
Certification	-	-	Floorscore®	

CE MARKING

CE	EN 14041	-		
----	----------	---	--	--

(1) The implementation of an effective cleaning regime is the most important defence against infections.

MIPOLAM® 150 is a durable, high performing flexible homogeneous multipurpose flooring suitable for most types of heavy traffic areas. It benefits from PUR Protect surface treatment with excellent cleaning characteristics, improved resistance to scratching and scuffing.

MIPOLAM® 150 is recommended for public, institutional and commercial buildings where ease of maintenance and long life under heavy traffic are required.

Gerflor. Don't forget our complementary ranges!

Handrails

Wall Coverings & Protections

Entrance mats

Skirtings & Profiles

บริษัท ไทยวัฒนาสามัคคี จำกัด
Building Materials Store, Bangkok
02 374 2872, 02 377 1532, 02 377 3304
Showroom : Monday - Saturday 8am - 5pm

www.twspplus.com
E-mail: sale.twspplus@gmail.com
Line Official : @twspplus

QR code line official

LINE ID : @twspplus

We care / we act Our Commitments for a Sustainable future

CARBON FOOTPRINT*
-20 % kg
CO₂ equivalent/m²
between 2020 and 2025

BIOSOURCED CONTENT***
10 % by2025

RECYCLED CONTENT
30 % by2025

ADHESIVE FREE**
35 % by2025

ANNUAL VOLUME RECYCLED
60 000 t by2025